

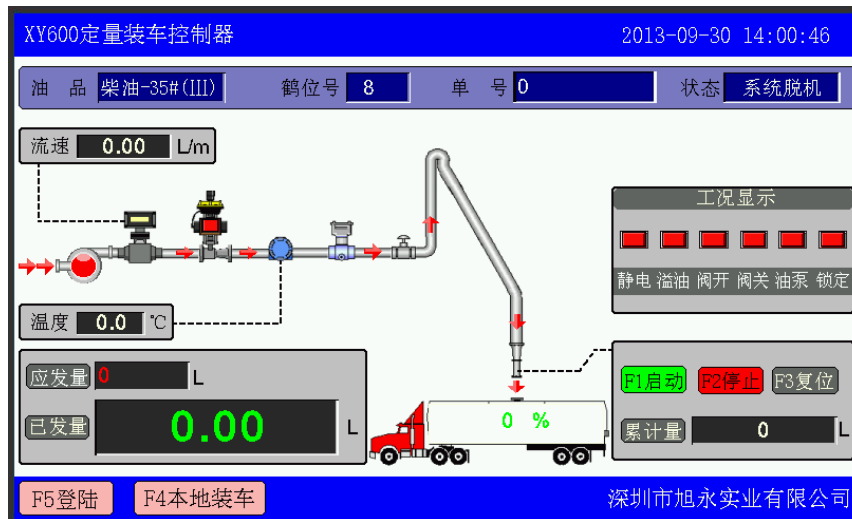
### XY600 Explosion-proof batch Controller

With **Siemens S7 PLC** as a master controller, XY600 batch controller is a presetting precision control equipment used in such industries as petroleum, chemical and food, etc. This controller is suitable for the batch control system comprising of a flow meter with pulse output, or a weighbridge with RS485 output, thermometer transmitted under 4-20mA, control valves(including the solenoid valves, multi-section control valves or regulating valves), as well as the oil spillage electrostatic protection device. Utilizing advanced PLC technology, the device provides flexible and easy-to-learn programming methods so that the users may choose options suitable for their needs to form various functions, therefore completing precision **batch loading/filling control** of the materials.



#### Basic features

- ✧ Real-time mass/volume, flow, temperature, density and time display
- ✧ Operating mode: online or offline
- ✧ Password verification function: including the password of the operators and the password of the system administrator.
- ✧ Has the function of protection of data upon loss of power and continuing the original working point once the power supply is resumed
- ✧ Has the interlock control function of protection against electrostatic and oil spillage
- ✧ Accurate control electromagnetic valves, two-section valves, and regulating valves, etc.
- ✧ Interlock control function of the pump and valve
- ✧ Mixing control: control online proportional mixing of the fluids accurately
- ✧ Temperature compensation function (linear, GB/T1885-1998 or API standard)
- ✧ Automatic conversion function of mass/volume delivered
- ✧ Flow coefficient/overshoot setting
- ✧ Self-diagnosis test
- ✧ Anti-surge protection



### Basic parameters

- ✧ Explosion-proof class: Exd(ib) II BT6
- ✧ Display screen: 7" TFT LCD color screen
- ✧ Supply voltage: AC220V or DC24V
- ✧ Quantity of oil dispensed: 999999
- ✧ Operation temperature: N: -20~+60°C W: -40~+70°C
- ✧ 2 pulse signal inputs:  $V_p-p \geq 2V$ , frequency  $\leq 30KHz$ ,
- ✧ 14DI: Used for feedback signals of pump and valve, spillage-earthing-proof switch
- ✧ 10DO: Used for controlling pumps and valves, or other purposes
- ✧ 2AI: Used for collecting temperature and density, etc. 4-20mA signal
- ✧ 1AO: Used for controlling transducer and adjusting valve
- ✧ 2 RS485 bus: Used for communication of a PC or other instruments.

### Basic type

- ✧ XY600A: used for single truck loading/ single filling tube
- ✧ XY600B: used for double truck loading/ double filling tube
- ✧ XY600C: used for multiple truck loading system/ multiple filling tube
- ✧ XY600D: used for online proportion of mixed loading/ automatic filling control device